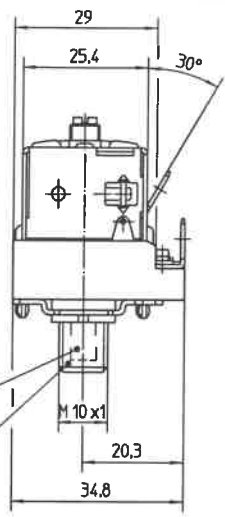
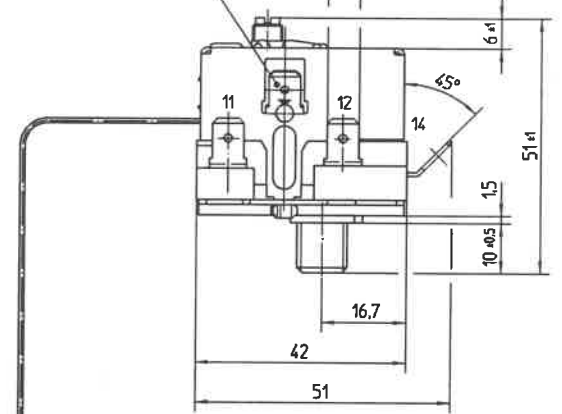


Tab terminal with earth symbol
DIN 46244-A6,3-0,8-St

DIN 46244-A 6,3-0,8-St



Reset button in the threaded bushing
Bushing made of plastic

Description of the function

The contact path 11 - 12 will open as soon as the cut out temperature is reached or the hydraulic system is leaking (repture of the capillary tube etc.)
If the limiting contacts open because the cut out off temperature had been reached, the contacts can be re-closed by pushing the reset button a.s.a. the temperature sensor has cooled down by ~ 20K.

The contact path 11 - 12 will also open if the sensor temperature is $\leq -5^{\circ}\text{C}$.
It will be automatically re-closed if the sensor reaches $\Delta t > 5\text{K}$.

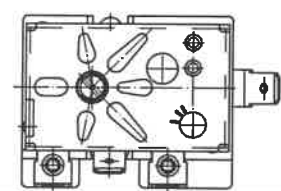
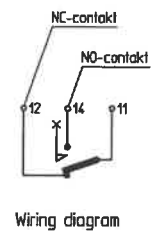
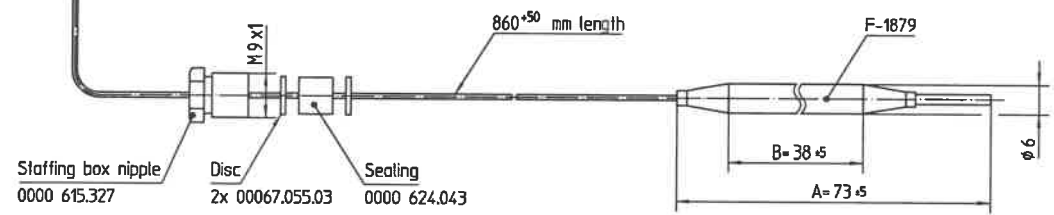
Approved technical data see drawing No.: 56.10500.000 page 901

- Notes:
- Standard atmosphere DIN EN 60068-1 (23±2)°C
 - Min. sensor temperature: -50°C
 - Max. sensor temperature: 160°C (for security reasons)
 - Snap action spring: NiBe
 - Max. housing temperature (VDE): 125°C
 - Max. housing temperature (UL): 85°C
 - Min. bending radius of capillary tube: 5mm

- With trip-free function
- Built-in position optional
- For application in normal pollution level (Typ 2 B D E F H K L)
- Fixing thread - max. torque 180Ncm
- Customer drawing-No.:

Correction factor: $c = 0,37 \text{ [K/K]}$
(referred an ambient temperature)

Nut M10x1 0000 600.075 and Cup nut 0000 525.015 can be supplied. If part is required please order separately.



Thermal cut-out switches contact 11 - 12 "Off" at a sensor temperature of: 120°C -9K

Diese Unterlage erhalten sie nur zu dem vereinbarten Zweck anvertraut. Jegliche Art der Vervielfältigung, Verwertung und Mitteilung ihres Inhaltes ist nicht gestattet sowie nicht ausdrücklich zugestanden. Zuwiderhandlungen verpflichten zu Schadenersatz. Alle Rechte an bestehenden und künftigen Schutzrechten bleiben vorbehalten.		Rahmteil-Nr.	EN Wst.-Nr.	Maßstab 1:1
		Werkstoff		
		Oberflächenangaben nach ISO 1302		
		Allgemeintoleranz ISO 2768-v		
		CAD Datum Name	Bezeichnung	
		Erst. 2009-01-22 POSOVSKY	EGO Theral cut-out	
Änd. Mitteilungs-Nr.	Datum	Bearb.		
Erst. E11978	2009-01-22	Freig.	2009-01-22 KESSELBG	
		Zeichnungsnummer		Blattnr. Ver. Stof. Blätter Dak. Fremd.
E.G.O. Elektro-Gerätebau GmbH 75038 Oberderdingen		56.10522.590		
Urspr. 97.56105.385/10V2		Ers. d.		Ref..