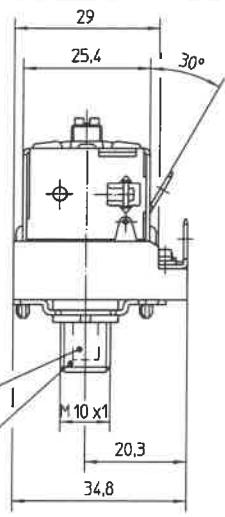
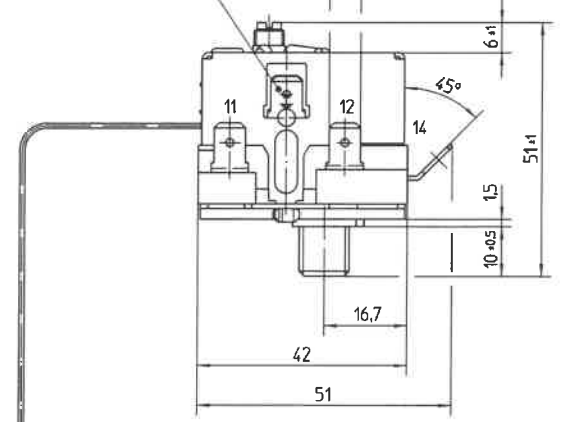


Tab terminal with earth symbol  
DIN 46244-A6,3-0,8-St

DIN 46244-A 6,3-0,8-St



Reset button in the threaded bushing  
Bushing made of plastic

### Description of the function

The contact path 11 - 12 will open as soon as the cut out temperature is reached or the hydraulic system is leaking (rupture of the capillary tube etc.)  
If the limiting contacts open because the cut out off temperature had been reached, the contacts can be re-closed by pushing the reset button a.s.a. the temperature sensor has cooled down by ~ 20K.

The contact path 11 - 12 will also open if the sensor temperature is  $\leq -5^\circ\text{C}$ .  
It will be automatically re-closed if the sensor reaches  $\Delta t > 7\text{K}$ .

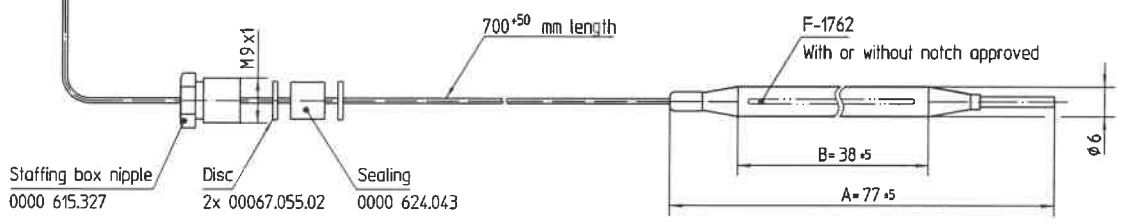
Approved technical data see drawing No.: 56.10500.000 page 901

Notes:  
Standard atmosphere DIN EN 60068-1 (23±2)°C  
Min. sensor temperature: -10°C (DC)  
Max. sensor temperature: 180°C

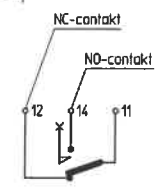
(for security reasons)  
Snap action spring: NiBe  
Max. housing temperature (VDE): 125°C  
Max. housing temperature (UL): 85°C  
Min. bending radius of capillary tube: 5mm  
With trip-free function  
Built-in position optional  
For application in normal pollution level (Typ 2 B D E F H K L)  
Fixing thread - max. torque 180Ncm  
Customer drawing-No.:

Correction factor:  $c = 0,31 \text{ [K/K]}$   
(referred an ambient temperature)

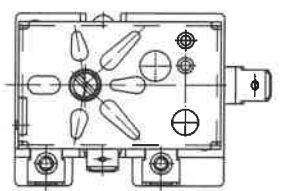
Nut M10x1 0000 600.075 and Cup nut 0000 525.015 can be supplied. If part is required please order separately.



Staffing box nipple 0000 615.327  
Disc 2x 00067.055.02  
Sealing 0000 624.043



Wiring diagram



Thermal cut-out switches contact 11 - 12  
"Off" at a sensor temperature of:  
137°C -10K

This document is exclusively committed to you for the agreed purpose. Any kind of duplication, utilization or communication of its content is prohibited, if not expressly conceded otherwise. Violators are committed to pay compensations. Any claims of existing or future property rights remain unaffected.			Blank No. .	EN Mat.No. .	Scale Unit mm
			Material .		Scale 1:1
			Surface Texture ISO 1302		
			General Tolerances ISO 2768-v		
			Designation	EGO Theral cut-out	
Cha.	Information No.	Date	Proc.	2011-03-28	POSOVSKY
F.Rel.	E15278	2011-03-28	Ret.	2011-03-28	SCHLAGET
			Drawing No.	56.10529.640	Sh.No. 101
			Ver.	0	Stat. F
			Sheets	2	Doc. .
			Ex.Dac.	.	.
Origin 97.56105.447/101/1			Repl.for .	Repl.by .	Ref. .